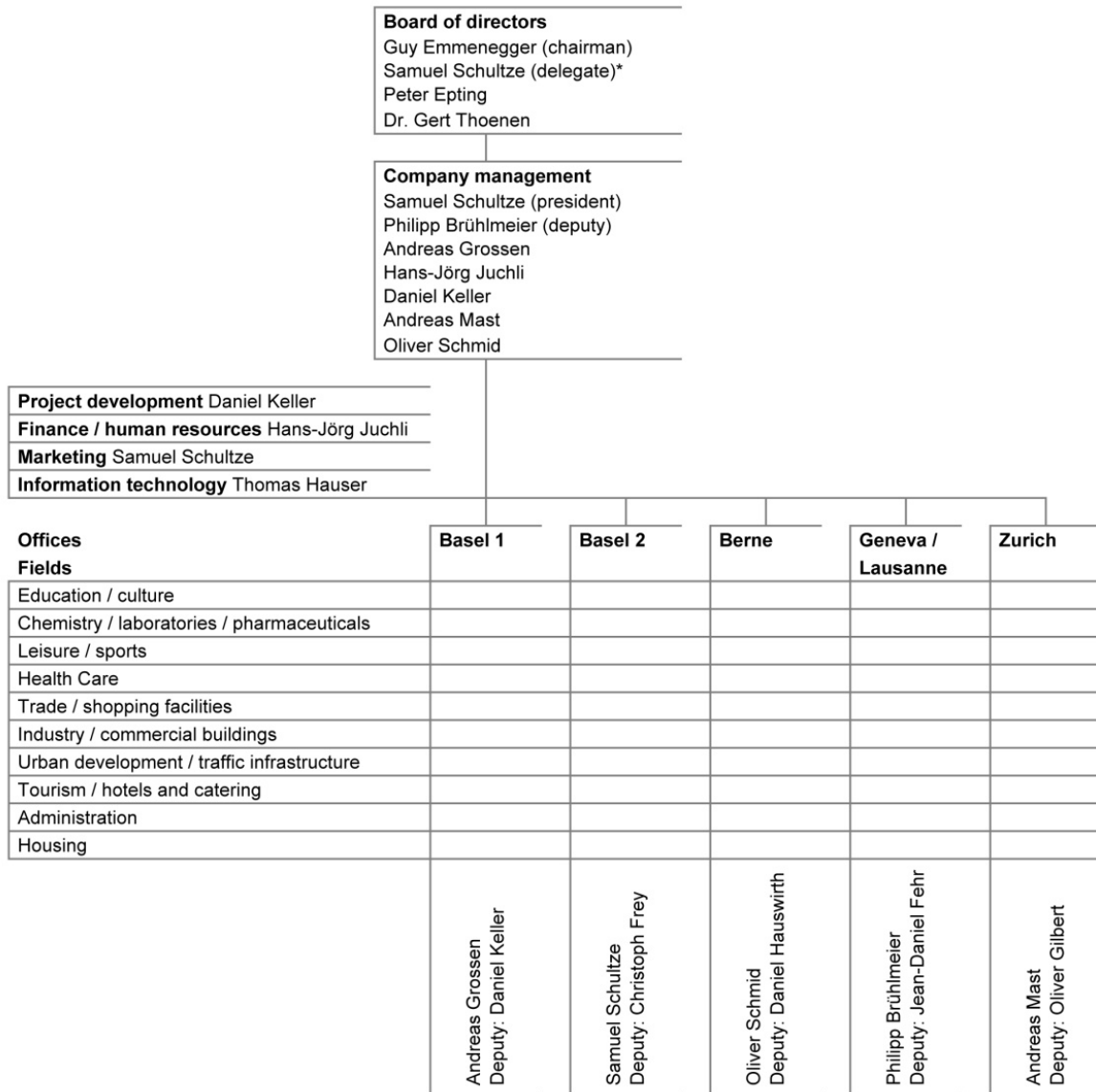


Organization Burckhardt+Partner AG



*Elections general assembly May 31, 2010

Subsidiary companies

AG für Planung und Überbauung, Basel
 Burckhardt Immobilien AG, Basel
 smeco swiss medical consulting, Basel
 tk3 SA Architecture Consulting Engineering, Lausanne
 Burckhardt+Partner GmbH, Grenzach/D